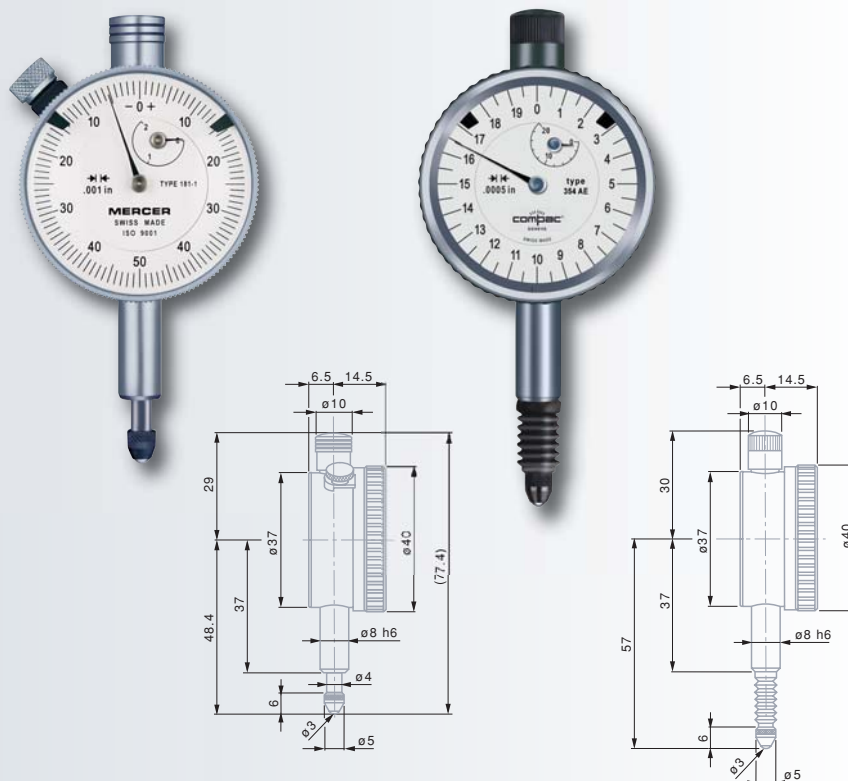


MERCER and COMPAC Precision Dial Gauges – Standard

40 mm dial diameter, inch reading



Factory standard

0.001 in
0.0005 in
0.0001 in

0.001 in : 2,2 mm
0.0005 in : 3,1 mm
0.0001 in : 1,1 mm

Rotating dial.

Full-metal case housing. Fixing shank and plunger in hardened stainless steel.

Adjustable tolerance markers. Measuring insert with a M2.5 thread.

Mounted insert with a 3 mm dia. steel ball tip

Cardboard box

Identification number

Inspection report with a declaration of conformity

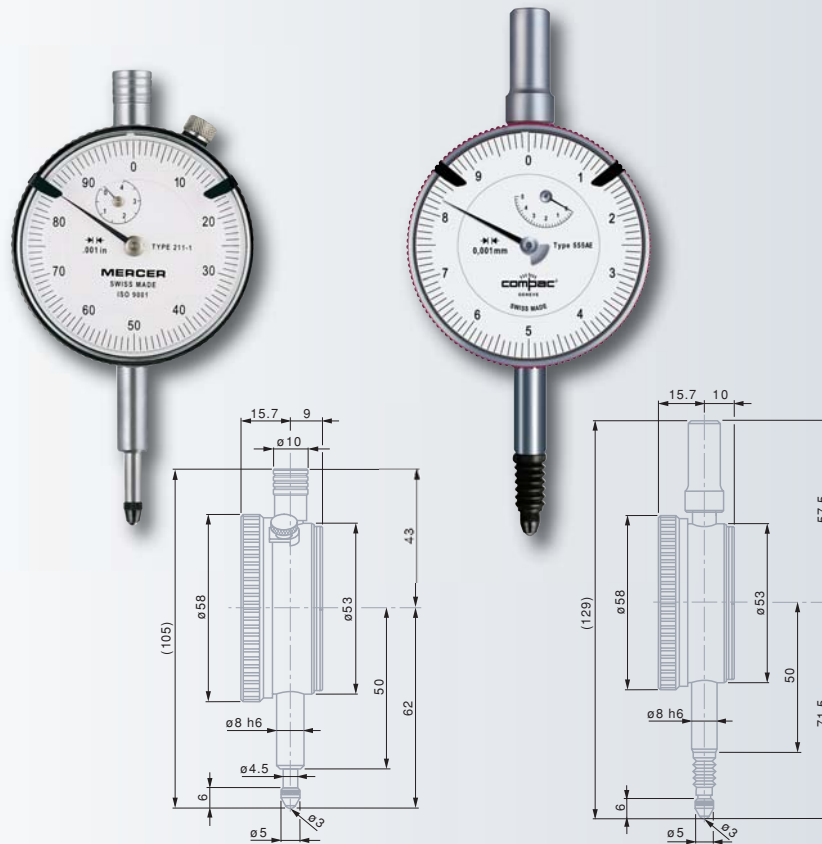
Models to 0.001, 0.0005 and 0.0001 in

No	=	in			in	in	in	in
		0.001	0.0005	0.0001				
<i>Standard line</i>								
01426010	181-1	0.001	0.200	0.212	–	●	0.1	0 ÷ 50 ÷ 0
01426011	182-1	0.001	0.200	0.212	–	●	0.1	0 ÷ 50 ÷ 100
01426012	183-1	0.0005	0.200	0.212	●	●	0.05	0 ÷ 25 ÷ 0
01426013	184-1	0.0005	0.200	0.212	●	●	0.05	0 ÷ 25 ÷ 50
354A		0.0005	0.200	0.212	●	–	0.02	0 ÷ 10 ÷ 20
<i>Standard line IP54 protected against the penetration of liquids</i>								
354AE		0.0005	0.200	0.212	●	–	0.02	0 ÷ 10 ÷ 20
355AE		0.0001	0.120	0.130	●	–	0.01	0 ÷ 5 ÷ 10

Permissible limits of a metrological characteristic (MPE/MPL)

	0.001 in	0.0005 in	0.0001 in
Deviation span	0.0005 in	0.0005 in	0.0004 in
	0.0006 in	0.0006 in	0.0005 in
Repeatability limit	0.00015 in	0.00015 in	0.00006 in
Max. hysteresis	0.00015 in	0.00015 in	0.00008 in
Measuring force	Standard line	≤ 1.4 N	≤ 1.7 N
	Standard line IP54		≤ 2 N

MERCER and COMPAC Dial Gauges – Standard 58 mm dial diameter, inch reading



Factory standard

0.001 in
0.0005 in
0.0001 in

0.001 in: 2.2 mm
0.0005 in: 3,1 mm
0.0001 in: 1,1 mm

Rotating dial.

Full-metal case housing. Fixing shank and plunger in hardened stainless steel.

Adjustable tolerance markers. Measuring insert with a M2.5 thread.

Mounted insert with a 3 mm dia. steel ball tip

Cardboard box

Identification number

Inspection report with a declaration of conformity

Models to 0.001, 0.0005 and 0.0001 in

No	Resolution	Scale	Measuring length	Measuring range	Measuring force	Measuring force	Measuring force
01426026	210-1	0.001	0.400	0.420	–	●	0.1 0 ÷ 50 ÷ 0
01426027	211-1	0.001	0.400	0.420	–	●	0.1 0 ÷ 50 ÷ 100
01426020	212-1	0.0005	0.400	0.420	–	●	0.05 0 ÷ 25 ÷ 0
01426021	213-1	0.0005	0.400	0.420	–	●	0.05 0 ÷ 25 ÷ 50
01426028	240-1	0.0001	0.200	0.210	–	●	0.01 0 ÷ 50 ÷ 0
01426029	241-1	0.0001	0.200	0.210	–	●	0.01 0 ÷ 50 ÷ 100
Standard line IP54 protected against the penetration of liquids							
555AE		0.0001	0.200	0.210	●	–	0.01 0 ÷ 5 ÷ 10

Permissible limits of a metrological characteristic (MPE/MPL)

	0.001 in	0.0005 in	0.0001 in
Deviation span	0.0006 in	0.0006 in	0.0005 in
Total deviation span	0.0007 in	0.0007 in	0.00055 in
Repeatability limit	0.0002 in	0.0002 in	0.00006 in
Max. hysteresis	0.0002 in	0.0002 in	0.00008 in
Measuring force	Standard line ≤ 1.4 N	Standard line ≤ 1.4 N	Standard line ≤ 1.7 N Standard line IP54 ≤ 2 N

MERCER Dial Gauge – Standard

58 mm dial diameter, inch reading, long range



Factory standard

0.001 in
0.0005 in

1,5 mm

Rotating dial.

Full-metal case housing. Fixing shank and plunger in hardened stainless steel.

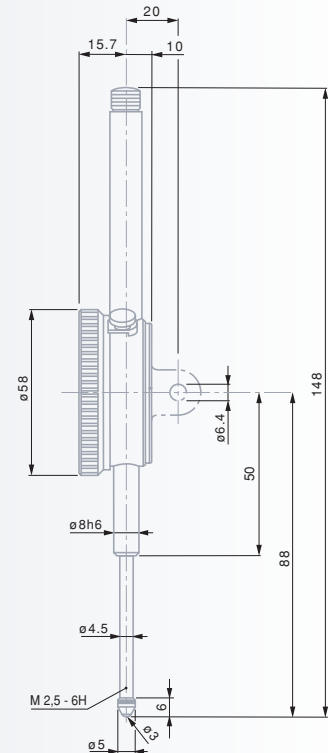
Adjustable tolerance markers. Measuring insert with a M2.5 thread.

Mounted insert with a 3 mm dia. steel ball tip

Cardboard box

Identification number

Inspection report with a declaration of conformity



Models to 0.001 in and 0.0005 in



Standard line

01426031	216-1	0.001	1	1.2	●	●	0.1	0 ÷ 50 ÷ 100
01426032	217-1	0.0005	1	1.2	●	●	0.05	0 ÷ 25 ÷ 50

Maximum permissible errors for a metrological characteristic (MPE)

Deviation span	0.0008 in	0.0008 in
Total deviation span	0.001 in	0.001 in
Repeatability limit	0.00015 in	0.00015 in
Max. hysteresis	0.0002 in	0.0002 in
Measuring force	≤ 2.2 N	≤ 2.2 N